



## PALKIA PAPERCRAFT MODEL AND GAME DISPLAY HOLDER



### Please follow these guides before you start

**Make sure the printer settings are set to 100% scale**  
**Make sure to print only on one side of the paper**

**Warning: Adult supervision is recommended!**


#### Things you may need:


Cutting: Scissors or sharp craft knife  
Sticking: Strong all-purpose glue or fast tack craft glue  
Clean cutting surface such as a cutting mat  
Paper recommendations  
160gsm – 200gsm

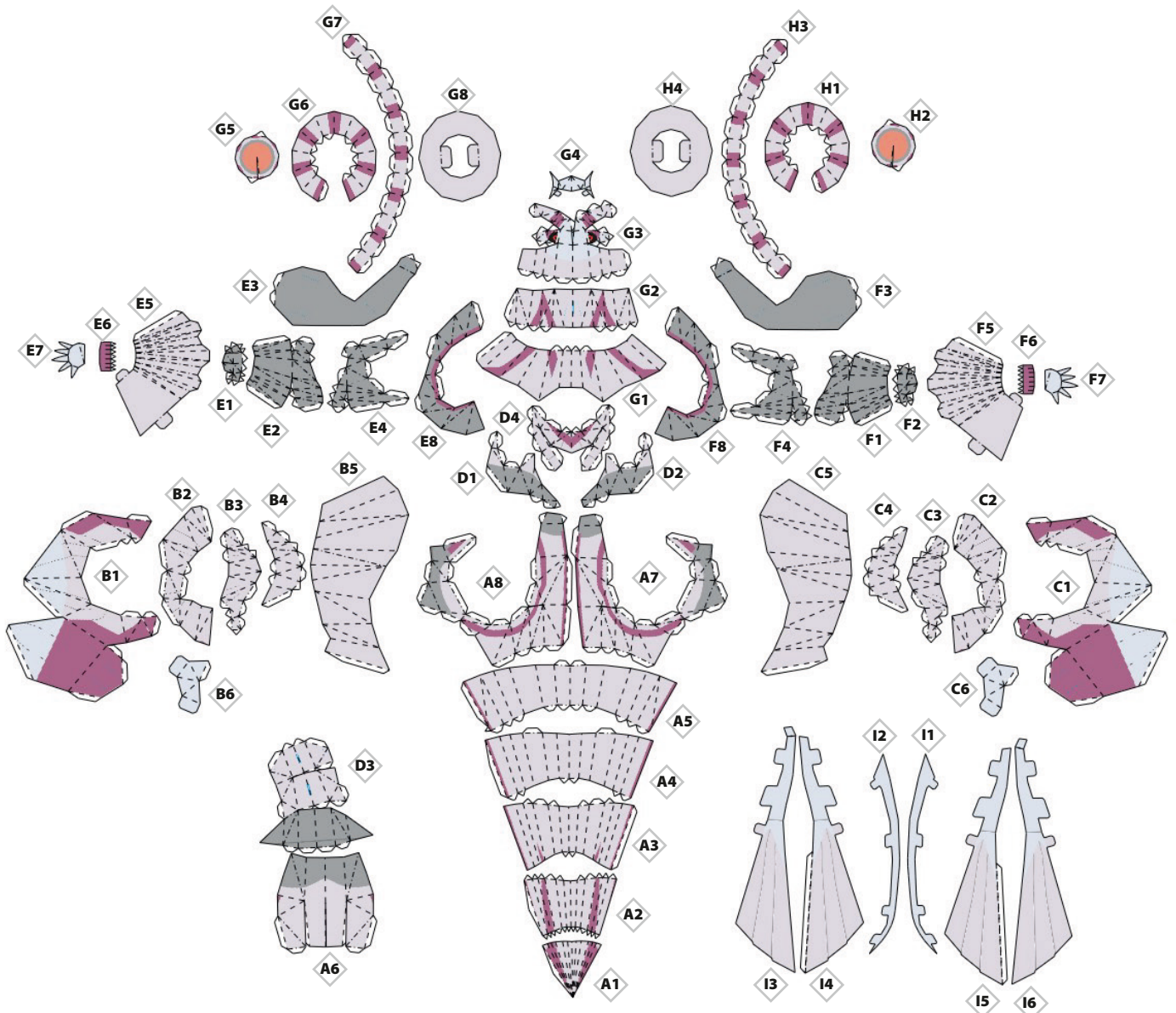
Please take care while making your Palkia papercraft model, but more importantly **have fun!**

 Slot cuts

 Cuts

 Inside fold

 Outside fold



A1



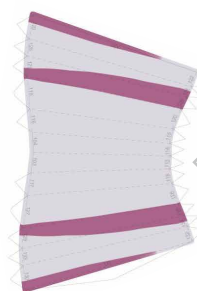
1

2



3

A2



4



5



A3

6



7



A4

8



9

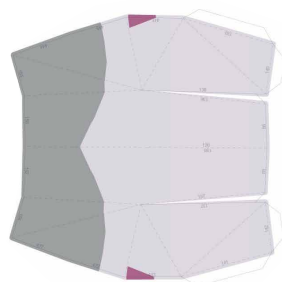


A5

10



11

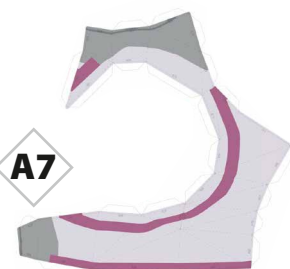


A6

12



13



A7

14



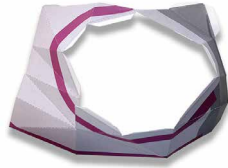
15





A8

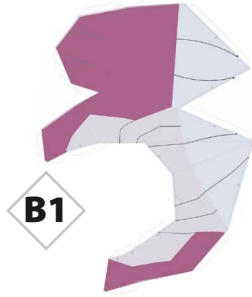
16



17



18



B1

19



20

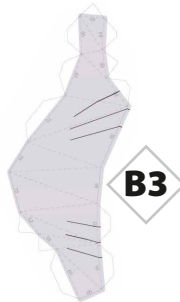


B2

21

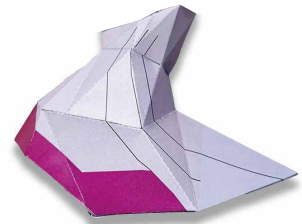


22

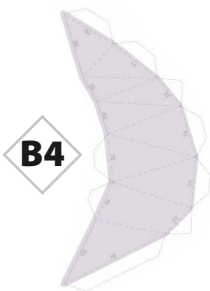


B3

23



24



B4

25

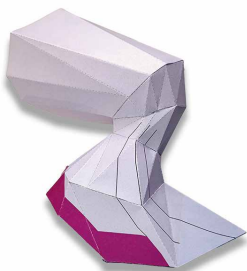


26

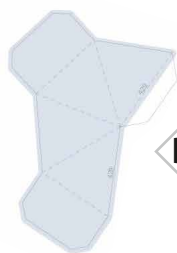


B5

27



28

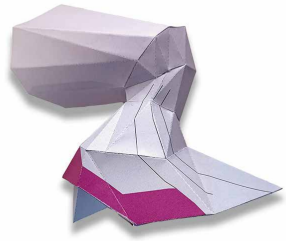


B6

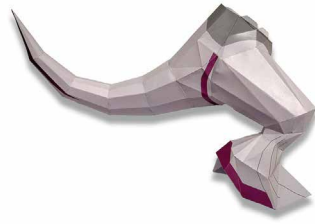
29



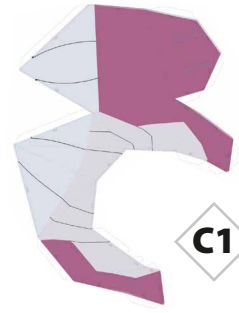
30



31



32



33



34



35



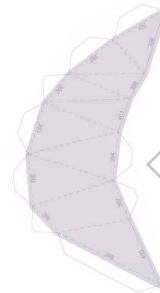
36



37



38



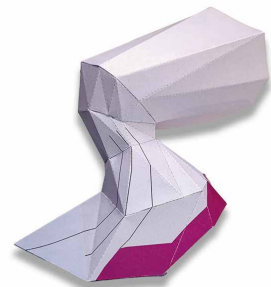
39



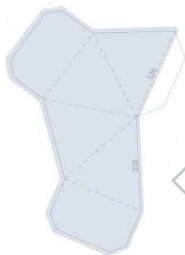
40



41



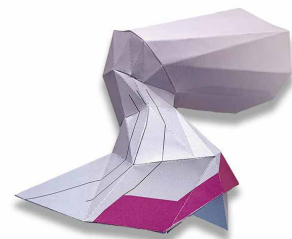
42



43



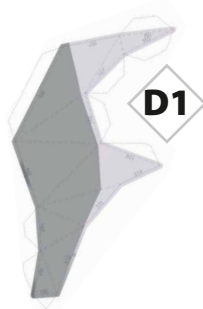
44



45



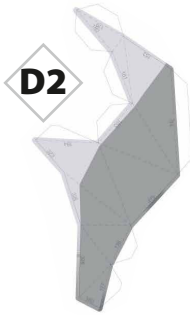
46



47



48



49



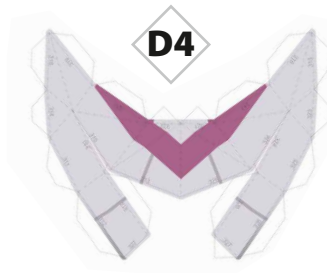
50



51



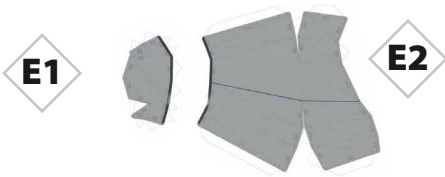
52



53



54



55



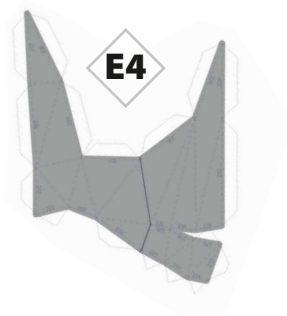
56



57



58

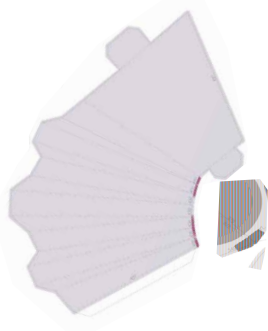


59

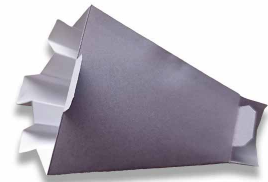


60

E5



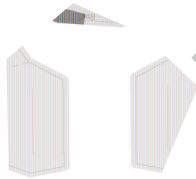
E6



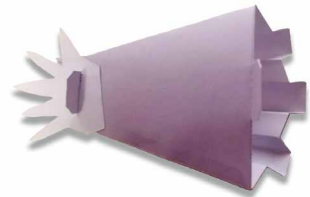
61

62

63



E7



64

65

66



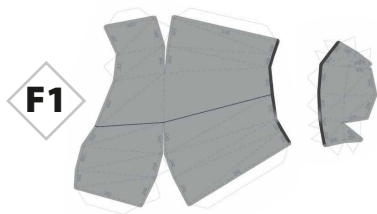
E8



67

68

69



F1

F2



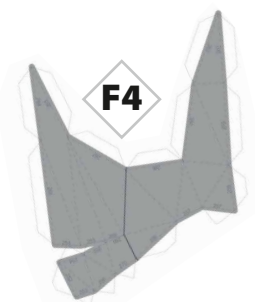
70

71

72



F3



F4

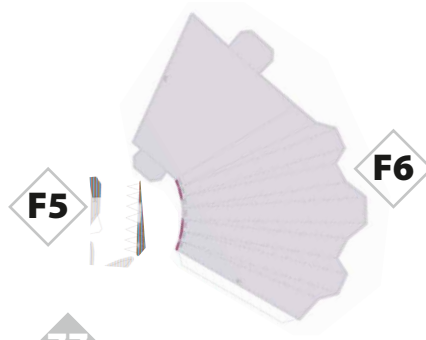
73

74

75



76



77



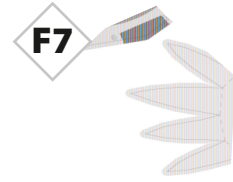
78



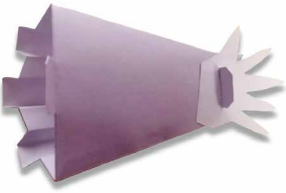
79



80



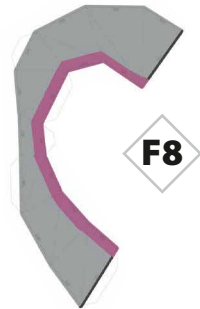
81



82



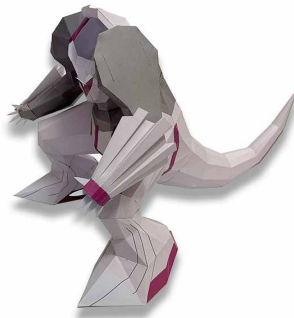
83



84



85



86



87



88



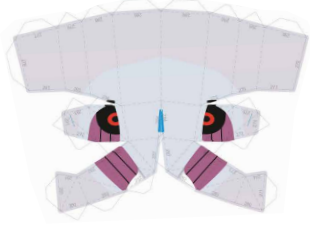
89



90



G3

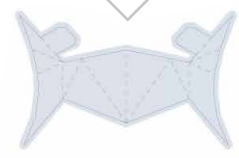


91



92

G4

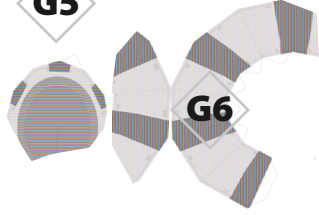


93



94

G5



95

G6



96



G7

97

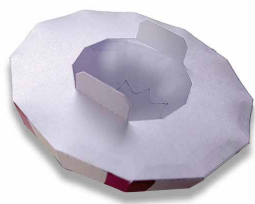


98



G8

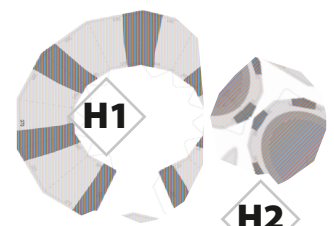
99



100



101



H1

H2

102



103

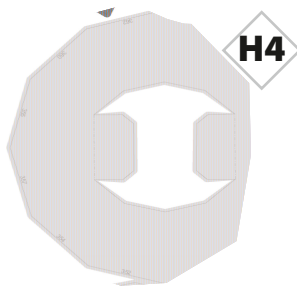


H3

104

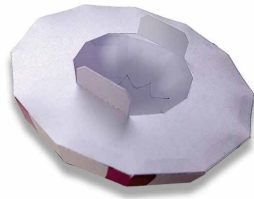


105



H4

106



107



I1

I2

108



109



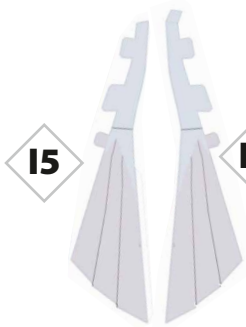
I3

I4

110



111



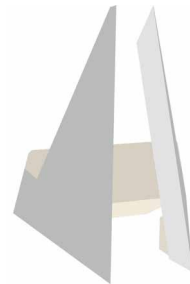
I5

I6

112



113



114

